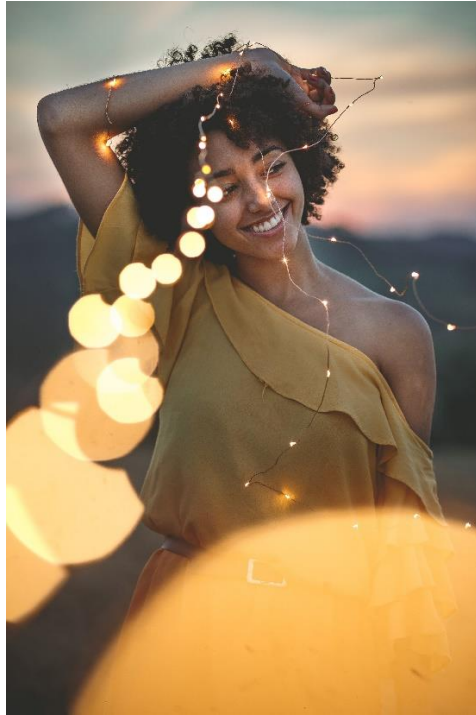


# The Lightness of The Universe



**Mushiba:** Oh, how seriously we can take ourselves, especially when in the midst of a challenging lesson and being lighthearted may be the last thing we feel. Waith has demonstrated frequently that he takes his *Mission* seriously, while at the same time *Viewing Himself* very lightly ~ quite the balancing, even for an Angelic! A favorite Waith quote regarding this:

**Waith:** *"We have a serious mission ~ and yet, it does not mean that we are serious all the time. However, it is easy for all of us, whatever plane we are on ~ whatever level ~ to lose sight of Lightheartedness. When we appear at times to be more serious, it is simply because of the information that comes through at a particular time."*

The ultimate patience is the ultimate Lightness ~ the ultimate Light. The Lighter we are, the more humor we are able to exhibit ~ it is essential to the Soul to laugh. Remember, The Universal Consciousness has complete Lightheartedness ~ and without that, how could The Universe put up with all of us?