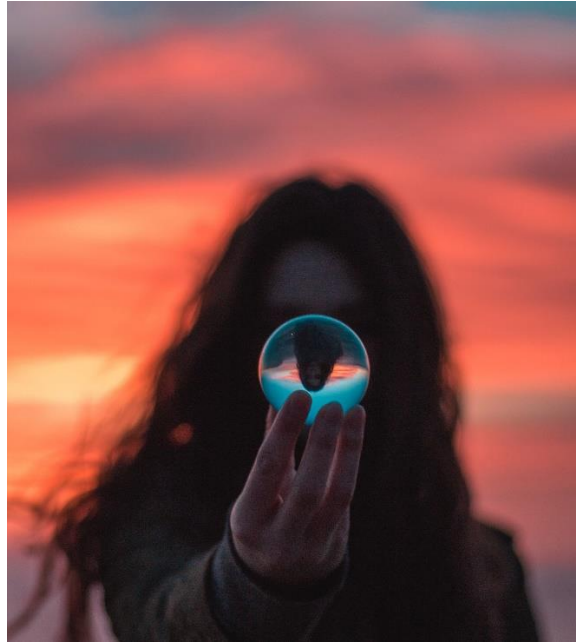


Empowering Self



Mushiba: We give away our power to external people and things. However, our journey is to regain the power we have given away so we can bring back our empowerment. In his counsel, Waith's overall theme emphasizes the *Search for Self* by Empowering Self. One of his more memorable quotes is:

Waith: *"There is no one outside of Self who can empower you."*

In our *Search for Self*, we continually face the challenges of regaining our power
~ Empowering Self ~ and as a result, we find joy and strength.